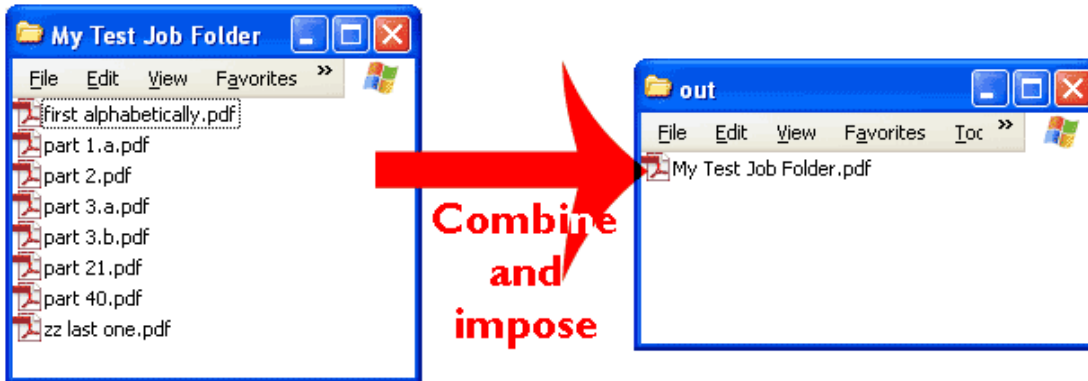


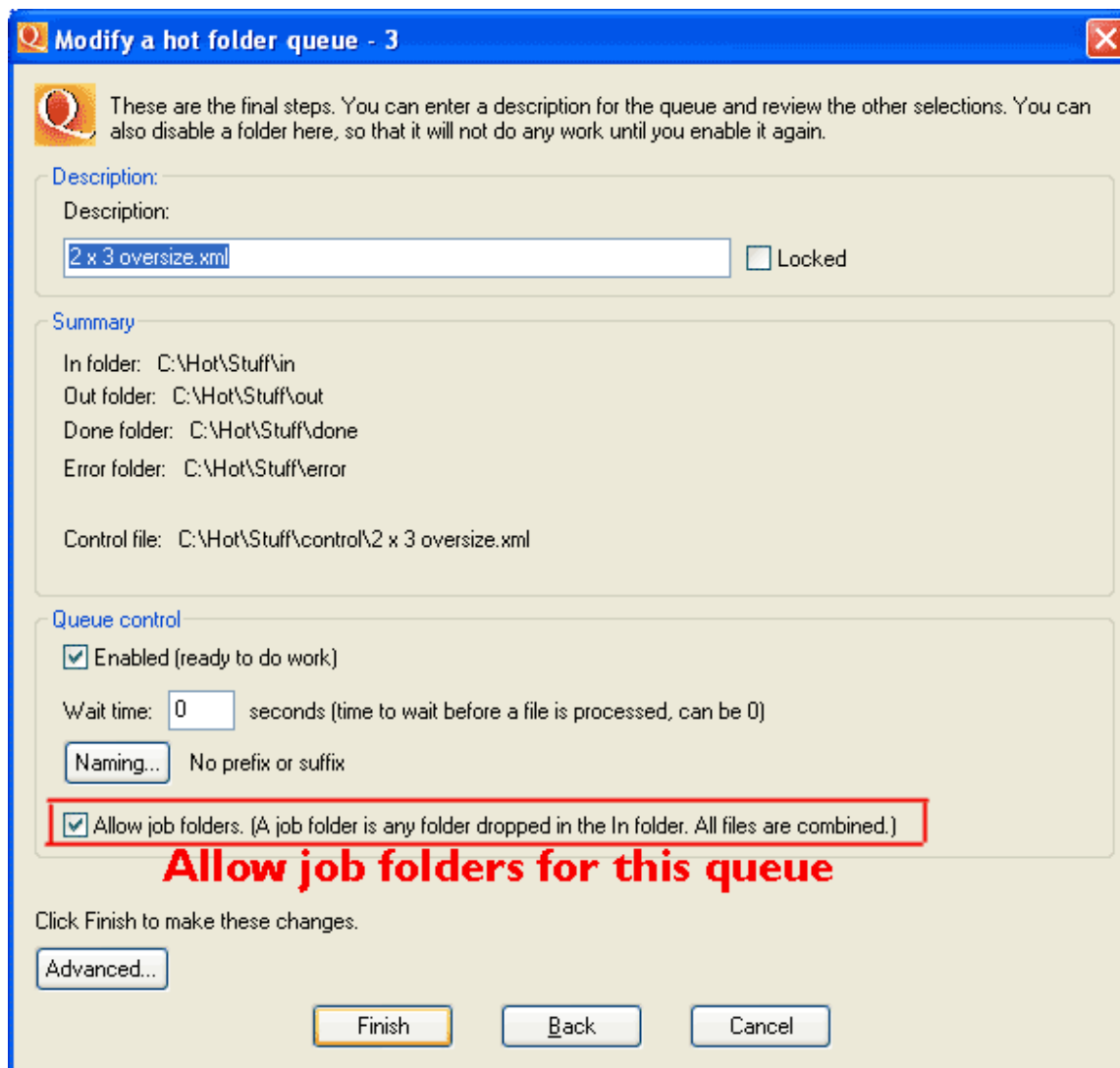
## Job folders in Quite Hot Imposing 4.0 and later

Job folders are an easy way to combine files before processing with Quite Hot Imposing. Just follow these steps.

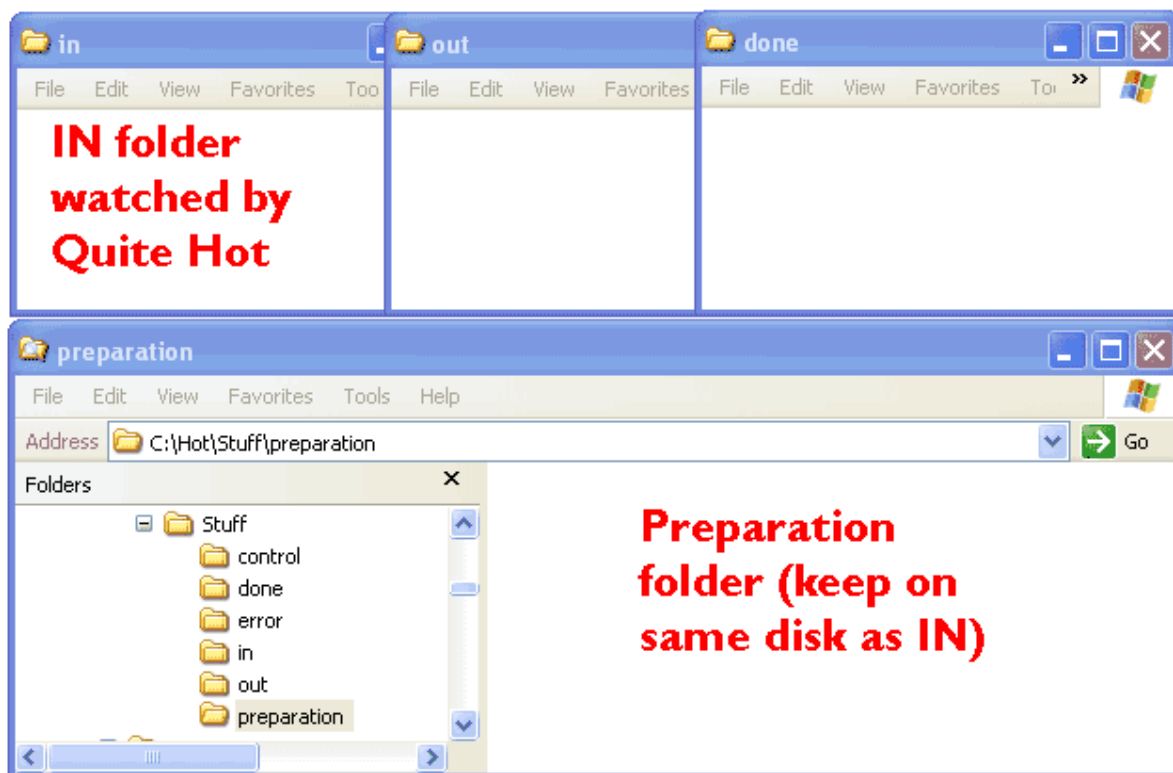


### 1. Set up queue to allow job folders.

Click Add to add a new queue, or to change an existing queue, click the **Action** button and choose **Setup**. The job folder option is on the third setup screen.

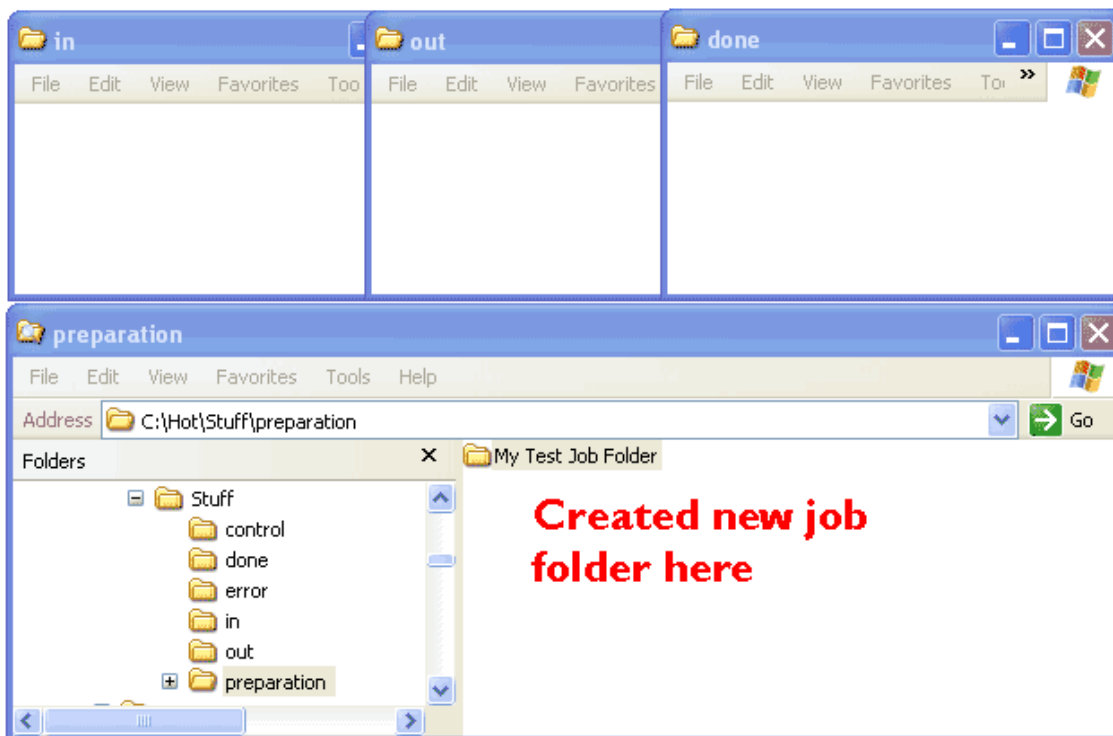


Creating a job folder right in the IN folder is not recommended. Quite Hot Imposing will see it and may process it while you are still adding files, so you end up with an incomplete output! We recommend setting up a separate folder for preparing job folders; when they are ready you will drag them to the IN folder.

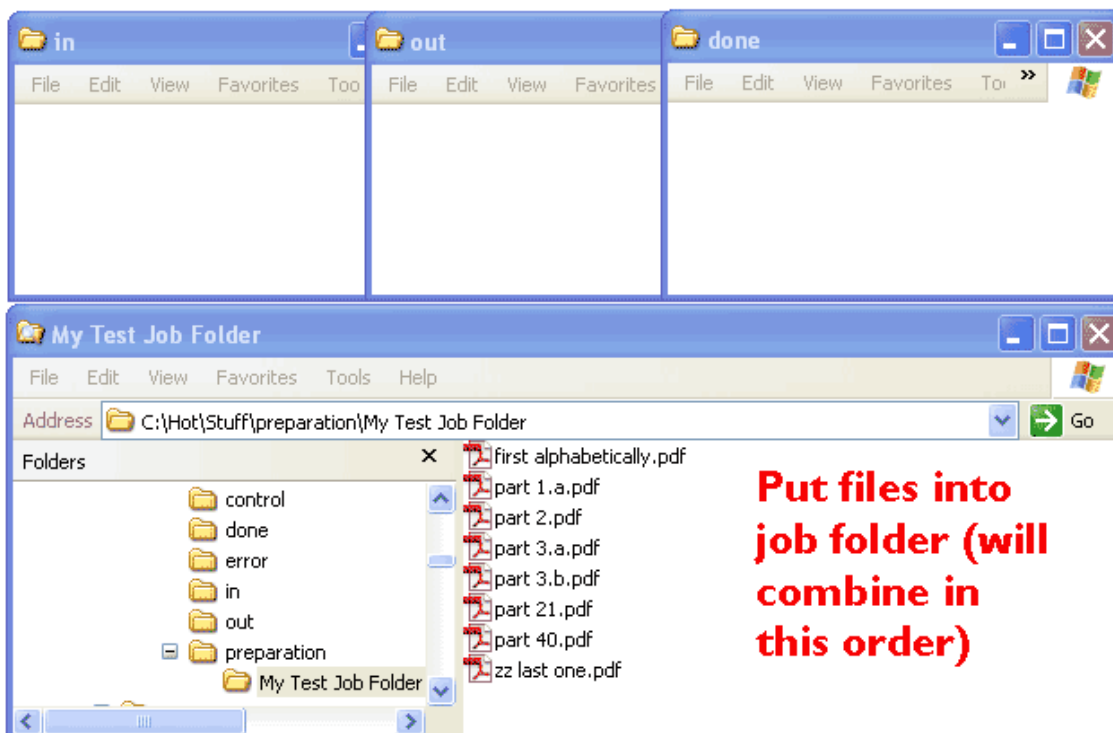


Working with a preparation folder means Quite Hot Imposing won't process your job folder before it is ready!

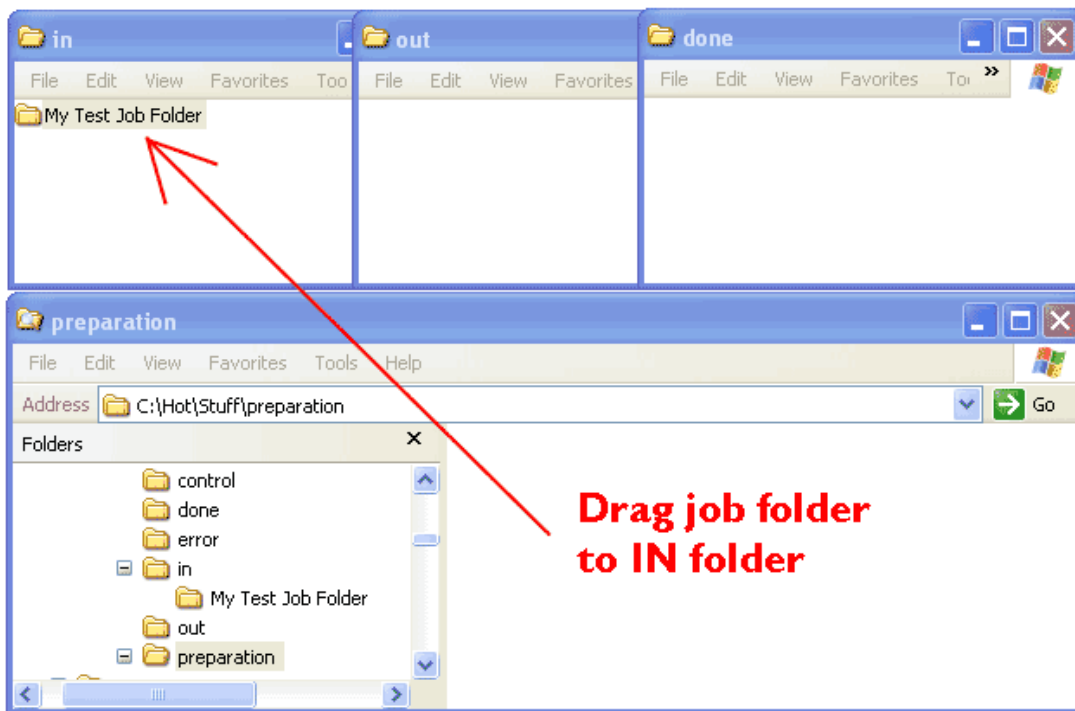
## 2. Create a job folder



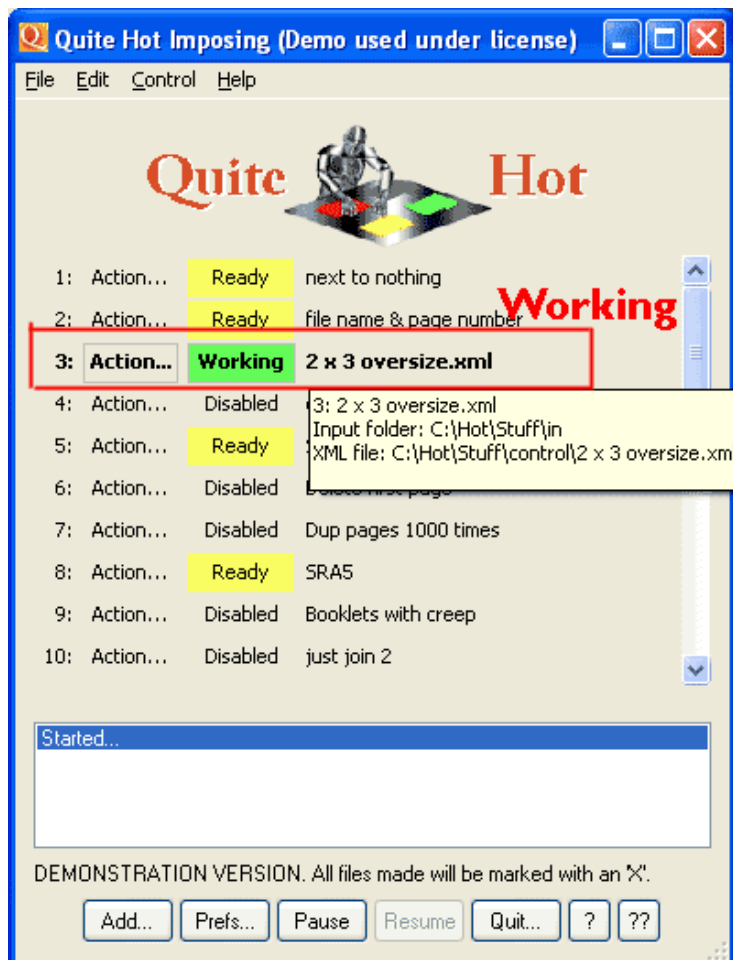
## 3. Add files to the job folder



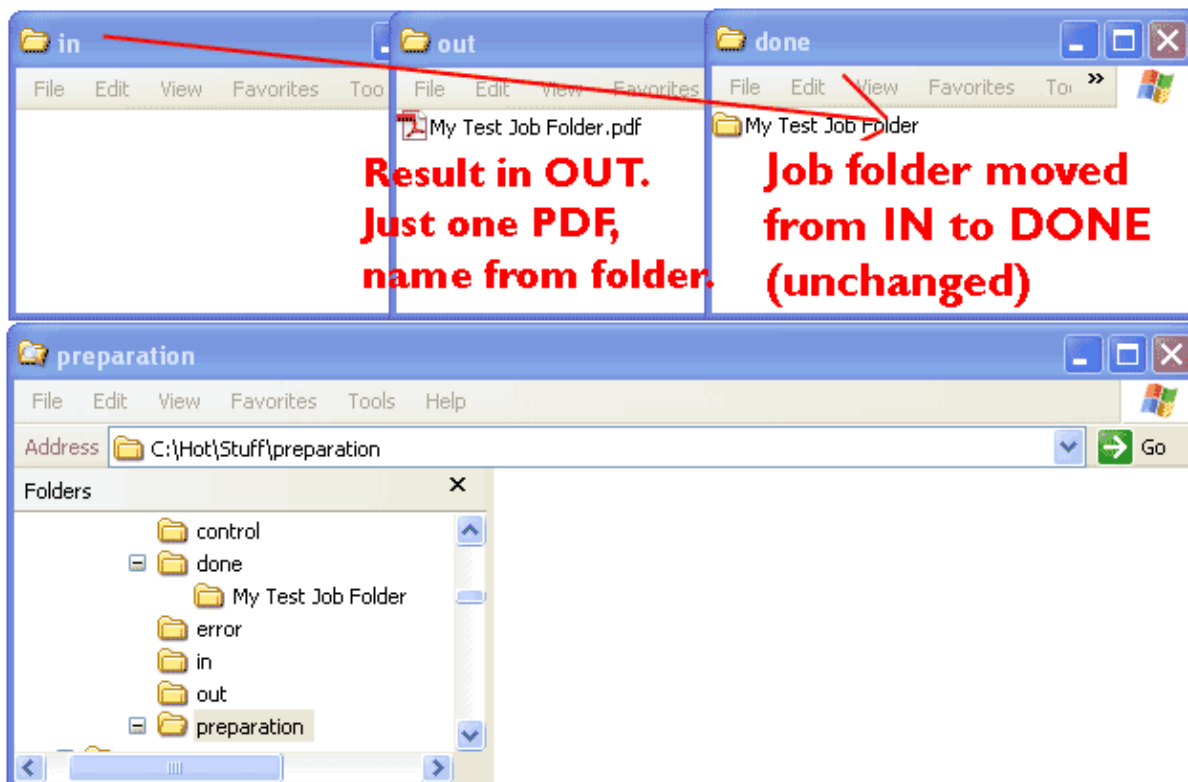
4. Drag the job folder to IN



Quite Hot Imposing will start to process the folder as a single job.



5. Result is in OUT, job folder moved to DONE



All the files from the job folder were combined into one, then the imposition was done, and a single file was written. The original folder, with all of the files still inside it, will be moved to DONE.